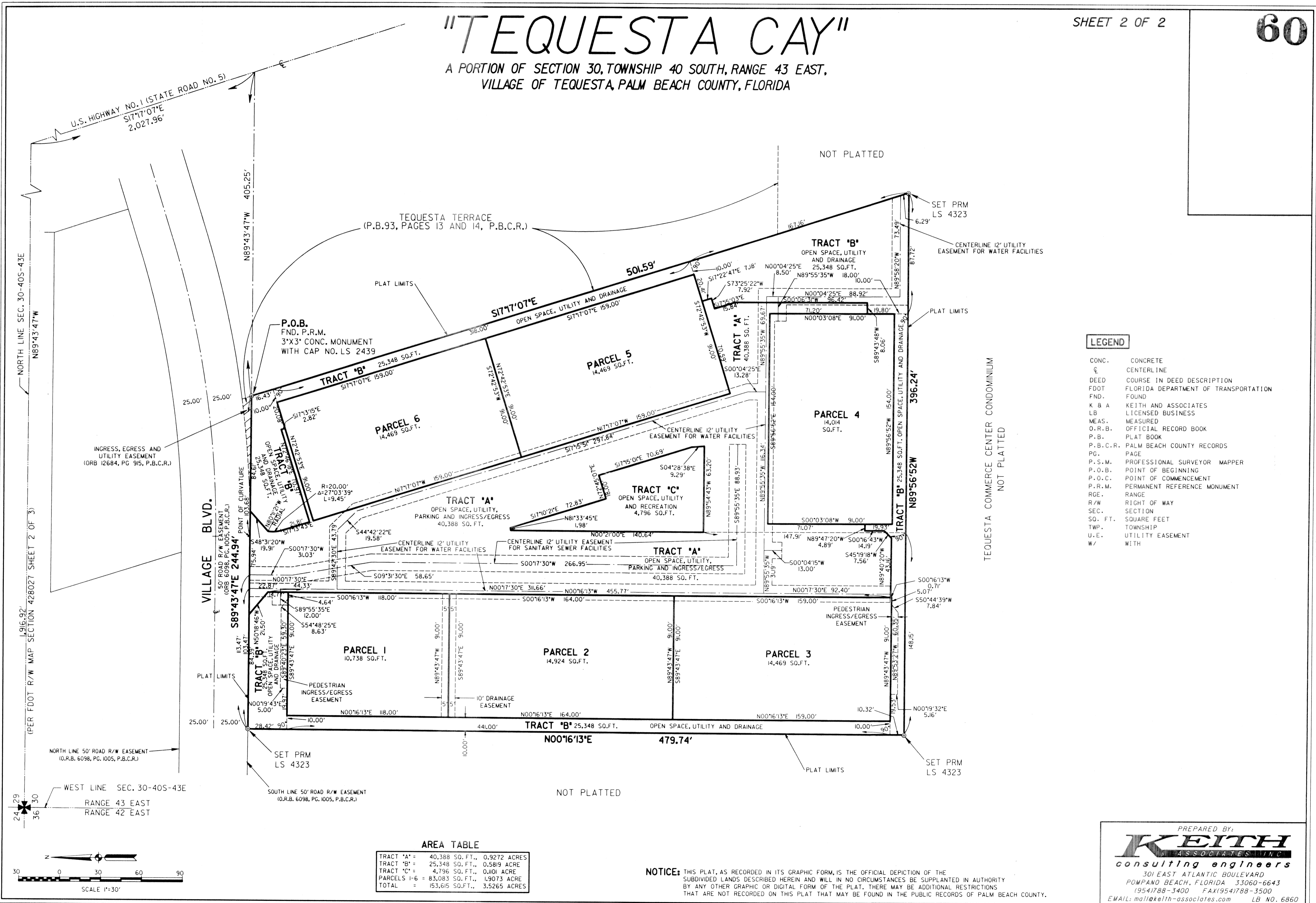


"TEQUESTA CAY"

A PORTION OF SECTION 30, TOWNSHIP 40 SOUTH, RANGE 43 EAST,
VILLAGE OF TEQUESTA, PALM BEACH COUNTY, FLORIDA



LEGEND

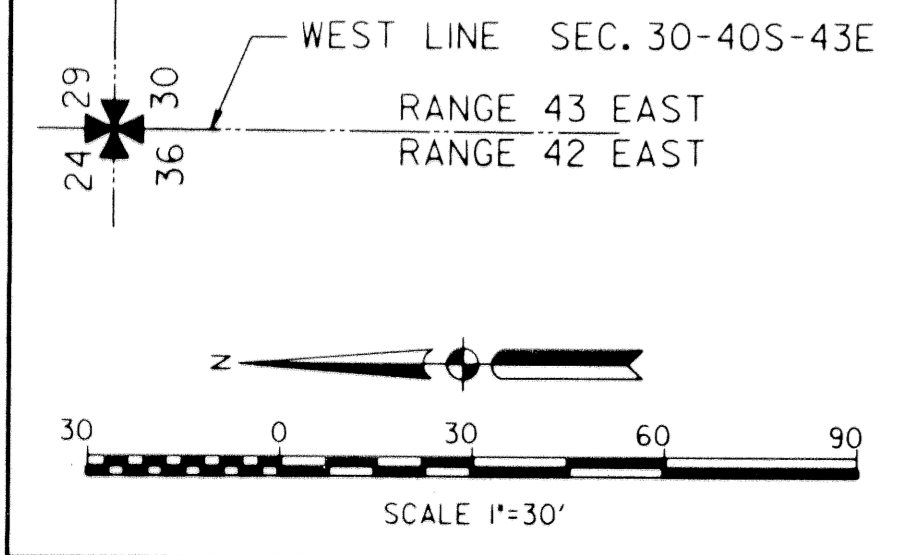
CONC.	CONCRETE
CL	CENTERLINE
DEED	COURSE IN DEED DESCRIPTION
FDOT	FLORIDA DEPARTMENT OF TRANSPORTATION
FND.	FOUND
K & A	KEITH AND ASSOCIATES
LB	LICENSED BUSINESS
MEAS.	MEASURED
O.R.B.	OFFICIAL RECORD BOOK
P.B.	PLAT BOOK
P.B.C.R.	PALM BEACH COUNTY RECORDS
PG.	PAGE
P.S.M.	PROFESSIONAL SURVEYOR MAPPER
P.O.B.	POINT OF BEGINNING
P.O.C.	POINT OF COMMENCEMENT
P.R.M.	PERMANENT REFERENCE MONUMENT
RGE.	RANGE
R/W	RIGHT OF WAY
SEC.	SECTION
SO. FT.	SQUARE FEET
TWP.	TOWNSHIP
U.E.	UTILITY EASEMENT
W/	WITH

AREA TABLE

TRACT 'A'	40,388 SO. FT.	0.9272 ACRES
TRACT 'B'	25,348 SO. FT.	0.5819 ACRE
TRACT 'C'	4,796 SO. FT.	0.1101 ACRE
PARCELS 1-6	83,083 SO. FT.	1.9073 ACRE
TOTAL	153,615 SO. FT.	3.5265 ACRES

NOTICE: THIS PLAT, AS RECORDED IN ITS GRAPHIC FORM, IS THE OFFICIAL DEPICTION OF THE SUBDIVIDED LANDS DESCRIBED HEREIN AND WILL IN NO CIRCUMSTANCES BE SUPPLANTED IN AUTHORITY BY ANY OTHER GRAPHIC OR DIGITAL FORM OF THE PLAT. THERE MAY BE ADDITIONAL RESTRICTIONS THAT ARE NOT RECORDED ON THIS PLAT THAT MAY BE FOUND IN THE PUBLIC RECORDS OF PALM BEACH COUNTY.

PREPARED BY:
KEITH ASSOCIATES, INC.
 consulting engineers
 301 EAST ATLANTIC BOULEVARD
 POMPANO BEACH, FLORIDA 33060-6643
 (954) 788-3400 FAX (954) 788-3500
 EMAIL: mail@keith-associates.com LB NO. 6860



(PER FOOT R/W MAP SECTION 428027 SHEET 2 OF 3)

NORTH LINE SEC. 30-40S-43E
N89°43'47"W

WEST LINE SEC. 30-40S-43E
RANGE 43 EAST
RANGE 42 EAST

NORTH LINE 50' ROAD R/W EASEMENT
(O.R.B. 6098, PG. 1005, P.B.C.R.)

SOUTH LINE 50' ROAD R/W EASEMENT
(O.R.B. 6098, PG. 1005, P.B.C.R.)

VILLAGE BLVD.
50' ROAD R/W EASEMENT
(O.R.B. 6098, PG. 1005, P.B.C.R.)

INGRESS, EGRESS AND
UTILITY EASEMENT
(ORB 12684, PG 915, P.B.C.R.)

P.O.B.
FND. P.R.M.
3"X3" CONC. MONUMENT
WITH CAP NO. LS 2439

TEQUESTA TERRACE
(P.B.93, PAGES 13 AND 14, P.B.C.R.)

U.S. HIGHWAY NO. 1 (STATE ROAD NO. 5)
S17°17'07"E
2,027.96'

TEQUESTA COMMERCE CENTER CONDOMINIUM
NOT PLATTED

SET PRM
LS 4323

CENTERLINE 12' UTILITY
EASEMENT FOR WATER FACILITIES

PLAT LIMITS

396.24'

TRACT 'B' 25,348 SO. FT. OPEN SPACE, UTILITY AND DRAINAGE

500'16'13"W 159.00'

500'16'13"W 159.00'

500'16'13"W 159.00'

500'16'13"W 159.00'

500'16'13"W 159.00'

500'16'13"W 159.00'

500'16'13"W 159.00'

500'16'13"W 159.00'

500'16'13"W 159.00'

500'16'13"W 159.00'

500'16'13"W 159.00'

500'16'13"W 159.00'

500'16'13"W 159.00'

500'16'13"W 159.00'

500'16'13"W 159.00'

500'16'13"W 159.00'

500'16'13"W 159.00'